

MyEquipAuctions

INDUSTRIAL DIVISION ***.com***

August 14, 2023

INDUSTRIAL
AUCTIONS



ONLINE ONLY Auction

NO LONGER NEEDED IN THE CONTINUING OPERATIONS OF IMPACT CNC, LLC

802 E. Short Street • Columbia City, IN 46725

BIDDING STARTS: MONDAY, JULY 31ST BIDDING ENDS: WEDNESDAY, AUGUST 16TH



FEATURING:

- DMG MORI NLX2500/700 CNC LATHE (2018) N258180809, MAX. SWING: 36.2 MAX. TURNING DIAMETER: 14.6, MAX. TURNING LENGTH 27.7", MAIN SPINDLE: 25 HP, 4,000 RPM, SPINDLE BORE: 3.5", MAX. BAR CAPACITY: 3.14", COUNTER SPINDLE: 15 HP, COUNTER SPINDLE MAX. SPEED: 6,000 RPM, ROTARY TOOL SPEED: 10,000 RPM (EXCLUDES TRANSFORMER)
- DMG MORI NLX 2500/700 CNC LATHE (2018) S/N LN258180811, MACHINING LENGTH 28.7", BAR CAP. 3.1", TURNING DIA. 18.1" (EXCLUDES TRANSFORMER)
- DMG MORI SEKI NTX2000/1500SZ MULTI FUNCTION CNC LATHE (2014), UNIVERSAL LIVE TOOL MILLING HEAD, TWIN SPINDLE, LOWER TURRET FANUC F31B5 CNC TURNING DIAMETER: 610 MM / 24.02", TURNING LENGTH: 1539 MM / 60.6", SWING DIAMETER MAX. OVER BED COVER: 660 MM / 25.98", 12000 RPM, TURRET NO. 2 STATIONS: 10, SPINDLE 1 MOTOR: 30 HP, SPINDLE 2 MOTOR: 30 HP, BAR CAPACITY SPINDLE 1: 80 MM, SPINDLE 2 RPM: 5000, BAR CAPACITY SPINDLE 2: 65 MM (EXCLUDES TRANSFORMER) (LOCATION - PDQ)
- DMG MORI SEKI NL2500/700 CNC LATHE S/N NL251J05411 (2010), 10" CHUCK, 36.4" SWING, 27.7" MACHINING LENGTH, 3.1" BAR CAP., 24.7HP, 4000 RPM, 14" TURNING DIA., TAILSTOCK, LIVE TOOLING, (EXCLUDES TRANSFORMER) (LOCATION - 600 EAST)
- (2) FUJI CSD-300 TWIN SPINDLE CNC LATHE (2014) S/N SE0102377 & SE0102378, GANTRY LOAD AND STOCKER TABLE, RECOMMENDED WORK SIZE 200 X 100 MM, SPINDLE DIAMETER 3100 MM, SPINDLE NOSE A2-6, SPINDLE BORE 56 MM, SPINDLE SPEED - RPM MAX. 3630, SLIDE STROKE: X-AXIS 140 MM, SLIDE STROKE: Z-AXIS - (RAM TRAVERSE) 200 MM, TURRET TOOL STATIONS 10 + 10, FANUC CONTROL (EXCLUDES TRANSFORMER)
- HAAS MODEL EC-1600YZT 4 AXIS HORIZONTAL MACHINING CENTER S/N 2054550, TABLE SIZE 36" X 64", TABLE WEIGHT CAPACITY 10,000 LBS., X - AXIS TRAVEL 64", Y - AXIS TRAVEL 50", Z - AXIS TRAVEL 32", ROTARY TABLE INDEXING .001, CAT 50, SPINDLE SPEEDS 7,500 RPM 2 SPEED GEAR BOX, MAIN MOTOR 30 HP, RAPID TRAVERSE X, Z, Y, 1000 IPM, ATC CAPACITY 50, CHIP CONVEYOR, COOLANT THROUGH SPINDLE, PROBING (EXCLUDES TRANSFORMER) (LOCATION - PDQ)
- HAAS MODEL EC-1600 YZT HORIZONTAL MACHINING CENTER, S/N 2053962 (2012), SIZE 64 X36, X=64, Y=50, Z=40, 30HP, 6000 RPM, 50 TOOL ATC, CT OR BT 50, 36 X 64 PALLETS (EXCLUDES TRANSFORMER) (LOCATION - MORGANTON, NORTH CAROLINA)
- HAAS EC-1600-3X HORIZONTAL MACHINING CENTER, S/N 2052229 (2007), X-AXIS TRAVEL 64" Y-AXIS TRAVEL 40", Z-AXIS TRAVEL 32", TABLE SIZE 64" X 36", TABLE CAPACITY 10,000 LBS., SPINDLE SPEEDS, 2-SPEED GEARED HEAD 0-6000 RPM, SPINDLE DRIVE MOTOR 30 HP AC, SPINDLE TAPER 50, CUTTING FEED RATE 540 IPM, RAPID FEEDS, XY AXES 540 IPM, RAPID FEEDS, Z-AXIS 540 IPM, MAX. TOOL DIAMETER 4" 10", MAX. TOOL WEIGHT 30 LBS, TOOL-TO-TOOL 10.3 SECONDS, CHIP-TO-CHIP 12.6 SECONDS, 50 ATC, COOLANT THROUGH SPINDLE, PROBE (EXCLUDES TRANSFORMER) (LOCATION - MORGANTON, NORTH CAROLINA)
- DOOSAN MODEL LYNX 220C CNC LATHE (2014) S/N ML0013006003, FANUC SERIES I CNC, TOOL PRESETTER, 3 JAW CHUCK, SWING OVER BED: 20.1", SWING OVER SADDLE: 11.4", MAXIMUM TURNING DIAMETER: 12.0", MAXIMUM TURNING LENGTH: 12.7", BAR CAPACITY: 1.8", X-AXIS TRAVEL: 6.51", Z-AXIS TRAVEL: 13", SPINDLE SPEEDS: 6,000 RPM, SPINDLE NOSE: A2-6, TURRET: 12 STATIONS, RAPID TRAVERSE X/Z: 790/945 IPM, QUILL DIAMETER: 2.6", QUILL TAPER: MT#4, QUILL TRAVEL: 2.1", SPINDLE MOTOR: 20 HP (EXCLUDES TRANSFORMER) (LOCATION - 600 EAST)
- DOOSAN MODEL LYNX 220A CNC LATHE (2014) S/N ML0013006004, SWING OVER BED: 20.1", SWING OVER SADDLE: 11.4", MAXIMUM TURNING DIAMETER: 12.0", MAXIMUM TURNING LENGTH: 12.7", BAR CAPACITY: 1.8", X-AXIS TRAVEL: 6.51", Z-AXIS TRAVEL: 13", SPINDLE SPEEDS: 6,000 RPM, SPINDLE NOSE: A2-6, TURRET: 12 STATIONS, RAPID TRAVERSE X/Z: 790/945 IPM, QUILL DIAMETER: 2.6", QUILL TAPER: MT#4, QUILL TRAVEL: 2.1" SPINDLE MOTOR: 20 HP (EXCLUDES TRANSFORMER) (LOCATION - 600 EAST)
- (2) DOOSAN DNM400 VERTICAL MACHINING CENTER (2013) S/N MV0009000924 & MV0009000896, TABLE 36.2" X 17.1", TABLE LOAD CAPACITY 1,320 LBS., TRAVEL (X-AXIS) 30", CROSS TRAVEL (Y-AXIS) 17.1", VERTICAL TRAVEL (Z-AXIS) 20.1", FEED RATE 590 IPM, RAPID TRAVERSE RATE 1,417 IPM, 30 TOOL ATC, SPINDLE HORSEPOWER 20 HP, SPINDLE TAPER #40 (EXCLUDES TRANSFORMER)
- DOOSAN PUMA 2600LM LONG BED CNC LATHE, S/N ML0109000350, (IN SERVICE 2013), BAR CAPACITY 81 MM, MAX. TURNING DIAMETER 376 MM, MAX. TURNING LENGTH 1280 MM, X-AXIS RAPID TRAVERSE 30 M/MIN, Z-AXIS RAPID TRAVERSE 30 M/MIN, X-AXIS TRAVEL DISTANCE 260 MM, Z-AXIS TRAVEL DISTANCE 1350 MM, MAX. SPINDLE SPEED 3500 R/MIN, MAX. SPINDLE POWER 22 KW, NO. OF TOOL STATION 24 (EXCLUDES TRANSFORMER)
- DOOSAN MODEL HP4000 PALLET TYPE HORIZONTAL MACHINING CENTER (2013) S/N MH0004-000428, 4 AXIS, 15000 RPM, 40 TAPER, FANUC 311-MODEL A CNC CONTROL, 15.75 X 15.75 PALLETS, X=23.6, Y=22, Z=23.6, 14,000 RPM, 40 TOOL ATC, 40 TAPER (EXCLUDES TRANSFORMER) (LOCATION - 600 EAST)
- HURCO TMM10 LIVE TOOL CNC LATHE, S/N LT10-01001088AB, MAX. TURNING DIA. 11.6", MAX. TURNING LENGTH 27.6", MAX BAR CAPACITY 3", X-AXIS TRAVEL 9.8", Z-AXIS TRAVEL 29.5", C-AXIS MOVEMENT - SPINDLE .001 DEGREE, SPINDLE NOSE / SPINDLE BORE A2-8" / 3.5", SPINDLE SPEED (1 RANGE) 3,000 RPM, SPINDLE MOTOR 24 HP, LIVE TOOLING SPEEDS / MOTOR 4,000 RPM / 9 HP, NUMBER OF TURRET POSITIONS 12 POSITIONS, RAPID TRAVERSE RATES (X,Z) 750 IPM, 945 IPM, LIVE MILLING CAPABILITY, C-AXIS SPINDLE ROTATION, TOOL PRESETTER, CHUCK SIZE 10" 3-JAW HYDRAULIC CHUCK, TAILSTOCK W/ HYDRAULIC QUILL, PARTS CATCHER, RIGID TAPPING, USB PORT INTERFACE, RS232 PORT INTERFACE, WINMAX SOFTWARE ACCEPTS DXF FILES (EXCLUDES TRANSFORMER) (LOCATION - MORGANTON, NORTH CAROLINA)
- BROTHER TC-S2C-0 CNC DRILL & TAP CENTER (2006) S/N 111400, X=27.6, Y=15.7, Z=11.8, 10HP, 10,000 RPM, 21 TOOL ATC (EXCLUDES TRANSFORMER)
- BROTHER TC-S2A CNC DRILL & TAP CENTER (2000) S/N 111947, X=23.6, Y=18.9, Z=14.2, 10,000 RPM, 14 TOOL ATC (EXCLUDES TRANSFORMER)
- OKUMA MC-V4020 4 AXIS VERTICAL MACHINING CENTER (2001) S/N 345, X=40, Y=20, Z=17.7, 15HP, 8000 RPM, 20 TOOL ATC, CAT 40, 48 X 20 TABLE, OKUMA OSP-U10M CNC CONTROL (EXCLUDES TRANSFORMER)
- HAAS MODEL VF-3 CNC VERTICAL MACHINING CENTER, S/N 16760 (1999), SIZE 40 X 20 X 20, TRAVELS X=40, Y=20, Z=25, 30HP, 8100 RPM, 20 ATC, 48 X 18 TABLE, CAT OR BT 40 (EXCLUDES TRANSFORMER) (LOCATION - MORGANTON, NORTH CAROLINA)
- FRYER MODEL MM CNC MINI MILL, S/N 25022, 10 X 33 TABLE, ANILAM 5300M CONTROL, (EXCLUDES TRANSFORMER)
- (2) SOUTHWESTERN INDUSTRIES TRAK DPMSX3P CNC VERTICAL MILLING MACHINE, S/N 1240L455142 & 1240L455143 (2012), TABLE SIZE - 50" X 10", TRAVEL (X, Y, Z AXIS) - 31 X 17 X 23.5", QUILL DIAMETER - 3 15/16", MAXIMUM QUILL TRAVEL - 5", SPINDLE TAPER - NMTB 40, SPINDLE SPEED RANGE - 40-600, 300-5000, SPINDLE CENTER TO COLUMN FACE - 19", SPINDLE MOTOR POWER - 5 HP, MAXIMUM WEIGHT OF WORKPIECE - 1320 LBS., RAPID TRAVERSE X, Y, Z - 150 IPM, AUTO LUBE PUMP (EXCLUDES TRANSFORMER) (LOCATION - MORGANTON, NORTH CAROLINA)
- LAGUN 3HP MILLMATIC II 2 AXIS CNC VERTICAL KNEE MILL (2013) S/N 45006, 10 X 50 TABLE, 4200 RPM
- LAGUN MILLMATIC II 2 AXIS CNC VERTICAL KNEE MILL (2013) S/N 46621, 10 X 50 TABLE, 4200 RPM
- LAGUN 3HP FTV-2 VERTICAL MILLING MACHINE, ANILAM 3000M CONTROL, POWER DRAW BAR, TABLE: 10" X 55", SPEEDS: 55 TO 4,250 RPM, POWER QUILL FEED
- DEVILEG MODEL 38-48 PRECISION JIG MILL, S/N 1-255, DIAMETER OF SPINDLE: 3", SPINDLE SPEEDS: LOW: 12-237, HIGH: 12-134-1200, FEEDS: 6 .003, .0017, .012, .0075, .0047, VERTICAL SPINDLE TRAVEL: 38", FEED OUT OF SPINDLE: 16", SPINDLE TAPER: #40, SIZE OF TABLE: 30" X 48", LONGITUDINAL TRAVEL: 52", TABLE CROSS TRAVEL: 16", MAIN MOTOR: 7.5 HP, 220V, (TURNABLE NOT INCLUDED) (EXCLUDES TRANSFORMER) (LOCATION - MORGANTON, NORTH CAROLINA)
- BAILEIGH DDTM-5922 DOWN DRAFT TABLE S/N D16080085 (2016), TABLE SIZE 61" X 21.6", CFM 1790 PER MOTOR, NUMBER OF MOTORS 2, MOTOR HP .5 HP, FILTER TYPE 250 MICRON / FIREPROOF, NUMBER OF FILTERS 4, FILTER SIZE 16" X 20" X 1", TABLE LOAD CAPACITY 660 LBS., POWER 110V
- PROTO 1 MODEL RDMB DEBURRING MACHINE (2018) S/N 100283-1-4, TUBE DIAMETER: 0.125" - 8.0", TUBE WALL: .035" - SOLID ROD, CYCLE TIME: 4 - 8 SECONDS DEPENDING ON END CONDITION AND MATERIAL
- WINTON RD30 CNC TUBE BENDER • HINES MODEL PCHV-30.1D BALANCER S/N 104087 • ZOLLER JUNIOR BRAVO TOOL SETTER S/N 414441, MEASURING RANGE X-AXIS: 327 MM, Z-AXIS: 410 MM, TABLE DIMENSIONS: DM-230 MM, TABLE ROTATING: 360 PER HAND • TOOL DIAMETER: 200 MM, TOOL TAPER: SK50 • MAXI BLAST SAND BLASTER • HARDINGE DSM59 SPEED LATHE, 1HP, 9" SWING • LNS TURBO MH-250 CHIP CONVEYOR • BROWN & SHARP 6 X 18 MODEL 618 MICROMASTER SURFACE GRINDER, S/N 523-6181-3964 • BROWN & SHARP 6 X 18 MODEL 618 MICROMASTER SURFACE GRINDER, S/N 523-6181-3964 • HINES HWRS05 VERT. BALANCING MACHINE S/N 3096-35 • DYNATON PRO PLASMA TABLE • SUNNEN HOME S/N SKC47AB900X
- INGERSOLL RAND AIR COMPRESSOR • ROBOTIC WELDERS • CLAUSING NO. 20 MODEL 2277 DRILL PRESS, S/N 2070658, WITH HOFMAN BASE • MILLER MILLERMATIC 350P WELDER • MILLER MILLERMATIC 252 WELDER • MILLER DIALARC HF WELDER, STOCK NO. 901782, BERNARD MODEL 3500SS, PEDAL • MILLER MODEL CP-200 WELDER, STOCK NO. 902930, MILLER 60 SERIES 24V WIRE FEEDER • GLOBAL COMPUTER CART WITH MONITOR & KEYBOARD • (2) KEMPER FILTER-MASTER • INGERSOLL RAND AIR DRYER • PLATFORM SCALE 4 FT. X 4 FT. • UNI-HYDRO 65 TON MODEL 65-14 IRONWORKER, S/N 3PF1005 • CLAUSING DRILL PRESS WITH HINES BASE • TSUDAKOMA MODEL RBS-160 RH ROTARY TABLE, S/N 171158 • TOOLEX 13 X 23 RELOCK RWS-6008 TOMBSTONE, S/N 61670 • 10 X 10 X 28 TOMBSTONE • ASSORTED TOOLING • HYDRAULIC POWER UNITS • MAC-35WR MODEL PS-1F-A WELDING POSITIONER S/N 21050570 • KURT 6 IN. MACHINE VISES • LOT: ASSORTED WELDING GUNS & WIRE • WELDING TABLES • AO SMITH HOT WATER TANKS

WGLENN A.
INTERNITZ LLC
INDUSTRIAL AUCTIONEERS & APPRAISERS

1401 Lunt Avenue • Elk Grove Village, Illinois 60007 • P. 773-290-1827 • F. 773-866-9601

glenn@winternitzauction.com

www.winternitzauction.com

2



WEBCAST AUCTIONS



WEBCAST AUCTION OF COMPLETE AEROSPACE FASTENER MANUFACTURER INCLUDING CARLO SALVI 246E TRANSFER HEADER (BUILT 2016 - LOW HOURS), WATERBURY HI-PRO AND TOGGLE HEADERS, RMG WIRE DRAWERS, PARTS FINISHING, LAB, TOOLROOM AND SUPPORT EQUIPMENT

AEROTECH FASTENERS

1 Ridge Rd. • Putnam, Connecticut 06260

30 Miles West of Providence, Rhode Island

SALE DATE: WEDNESDAY, AUGUST 16TH STARTING AT 10:00 AM

INSPECTION: Day Prior from 10:00 AM to 4:00 PM or by appointment with jeffjr@cia-auction.com

FEATURING:

- CARLO SALVI MODEL 246E TRANSFER HEADER (BUILT 2016 – NO PRODUCTION HOURS)
- WATERBURY HI-PRO COLD HEADERS
- WATERBURY TOGGLE HEADERS ¼", 3/16" AND 1/8"
- RMG WIRE DRAWERS, MODELS 56, 45 AND 34
- PARTS FINISHING
- LAB AND TEST DEPARTMENT
- TOOLROOM AND MAINTENANCE MACHINERY
- TOYOTA FORKLIFT
- AIR COMPRESSOR
- SUPPORT EQUIPMENT
- **MORE DETAILS COMING SOON!!!**



WEBCAST AUCTION OF AEROSPACE FACILITY INCLUDING VERY CLEAN LATE MODEL LOW HOUR HAAS CNC EQUIPMENT UMC-750 UNIVERSAL MACHINING CENTERS, VMC'S & TC'S, OKUMA TC & MONARCH LATHE



HARRISON MANUFACTURING, INC.

4040 E 2nd Pkwy • Terre Haute, IN 47804

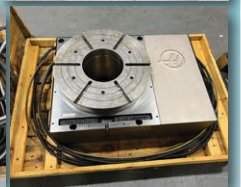
70 Miles West of Indianapolis, IN

SALE DATE: WED, AUGUST 23RD STARTING AT 11:00 AM ET

INSPECTION: Inspection: Day Prior from 10:00 AM to 4:00 PM or by appointment with joe@cia-auction.com

FEATURING:

- (2) HAAS MODEL UMC-750 FIVE-AXIS CNC UNIVERSAL MACHINING CENTERS, LOW HOURS (2017 & 2014)
- HAAS MODEL VF-6 CNC VMC, 50 TAPER, LOW HOURS (2015)
- HAAS MODEL VF-3YT CNC VMC, 50 TAPER, LOW HOURS (2014)
- HAAS MODEL VM-3 CNC VMC, 40 TAPER, LOW HOURS (2014)
- HAAS MODEL VF-2SS CNC VMC, 40 TAPER, LOW HOURS (2016)
- HAAS TR160Y TRUNNION, HAAS HRT450 4TH AXIS, HAAS HRT310 4TH AXIS
- HAAS MODEL ST-40 CNC TC, PRESETTER, LOW HOURS (2014)
- HAAS MODEL ST-35 CNC TC, PRESETTER, LOW HOURS (2016)
- (2) HAAS MODEL ST-20 CNC TC'S, PRESETTER, LOW HOURS (2016 & 2014)
- OKUMA MODEL LB35II CNC TC
- 34" X 60" MONARCH LATHE W/ DRO



18% BUYERS PREMIUM IN EFFECT FOR ALL PURCHASES

Cincinnati Industrial Auctioneers – IN License No. AC63004471 • Jeffrey L. Luggen – IN License No. AU01051612 • Joseph M. Luggen – IN License No. AU11200137



CINCINNATI INDUSTRIAL AUCTIONEERS
auctioneers | appraisers | since 1961

Check our website for ongoing & future auctions!

BidSpotter

For Photo Gallery & Sale Catalog & Additional Information Visit:

www.cia-auction.com

★ ★ **ONLINE ONLY AUCTION** ★ ★

**KUNO STEEL
PRODUCTS CORP.**

**132 Duffy Avenue
Hicksville, NY 11801**

DATE: BIDDING ENDS THURSDAY, AUGUST 17TH

Inspection: Wednesday, August 16th from 9:00 AM – 4:00 PM

MAJOR STRUCTURAL STEEL FABRICATION FACILITY



• **HIGHLIGHTS** •

- Peddinghaus CNC Anglemaster Punch & Shear Line
- Ficep CNC Drill Line
- Mobile Crane & Telehandler
- CNC Multi-Press Beam Fab & Profile Line
- Trucks & Trailers
- Mobile Loader
- Machine Tools
- Overhead Bridge Cranes
- Facility & Support Equipment
- And More!

Over 100 Tons of assorted raw materials including steel beams, flat stock, angles, pipes, flanges, aluminum, decking, and related!

*Terms: To be sold in accordance w/CRG terms as published on web & auction catalog.
All COVID-19 protocols will be implemented. Please visit our website for details.*

CRGAuction
Capital Recovery Group, LLC

Sale In
Conjunction With

M-N
MACHINERY NETWORK

www.crgllc.com • (800) 300-6852

ONLINE PUBLIC AUCTION

**Building Will Be
Available For
Lease or Sale After
Auction is Complete**



SALE END DATE:

THURSDAY, AUGUST 17TH • 10:00 AM MT

INSPECTIONS:

WEDNESDAY, AUGUST 16TH • 9:00 AM - 2:00 PM MT



PHOENIX METALCRAFT, INC.

**3845 N. 29TH Avenue
Phoenix, Arizona 85017**



**CNC PRESS BRAKES, SHEARS,
INSERTION PRESSES, HAAS
VF5SS, HAAS VF4SS, FORKLIFT,
WELDERS, POWDERCOATING
EQUIPMENT, ETC.**

Buyer's Premium: 15.00%

BidSpotter



Sale Conducted by:

The Arizona Auctioneers.

Auctioneer: Stephen M. Sommers

• AUCTIONEERS • APPRAISERS • LIQUIDATORS •

602-258-6981
PHOENIX

602-257-1935
FAX

1802 South First Avenue • Phoenix, Arizona 85003
www.arizonaauctioneers.com

AUCTION CALENDAR

COMPLETE 15 BBL BREW SYSTEM - TIMED ONLINE AUCTION

AUGUST 17TH

Record Street Brewing Company

- Brewhouse
- Fermenters and Brite Tanks
- Walk-In Cooler
- Production and Restaurant Support
- Kitchen and Food Preparation
- Restaurant and Bar Equipment

Reno, NV



JAPANESE NOODLE PRODUCTION FACILITY - TIMED ONLINE AUCTION

AUGUST 24TH

Formerly of Super Frec USA

- Stainless Steel Tanks and Pumps
- Noodle Production Equipment
- Packaging Equipment
- Material Handling
- Production Support Equipment

Gardena, CA



INDOOR CANNABIS GROWING & PACKAGING FACILITY- TIMED ONLINE AUCTION

SEPT. 6TH

Formerly of an innovative producer of Rare cannabinoids

- Packaging Line & Support Equipment
- Cannabis Handling, Growing & Flowering Equipment
- Production Support Equipment (over 400+ lots)

Ontario - Canada



IN PARTNERSHIP WITH

CHOCOLATE MOLDING, ENROBING & PACKAGING PLANT - TIMED ONLINE AUCTION

SEPT. 7TH

Formerly of SweetWorks Confections

- Molding Lines
- Hollow Molding Lines
- Enrobing Line
- Wrappers
- Chocolate Tanks, Melters and Tempering Units
- Caramel Kitchen

Buffalo, NY



IN PARTNERSHIP WITH

INDOOR AQUAPONIC VERTICAL FARMING PLANT- TIMED ONLINE AUCTION

SEPT. 7TH

Formerly of Upward Farms

- Mayer - Visser Horti Systems Seeding Line (new 2020)
- Growing, Harvesting & Washing Departments
- Multi-Head Weighing, Filling & Pack-off Line
- Plant Support & Office Equipment

Brooklyn, NY



IN PARTNERSHIP WITH

CONFECTIONERY PRODUCTION & PACKAGING EQUIPMENT- TIMED ONLINE AUCTION

SEPT. 12TH

Formerly of Oak Leaf Confections Co.

- Packaging Lines & Equipment
- Base Panning & Pressed Candy Tableting
- Gum Mixing, Forming & Packaging Lines
- Chocolate "Sixlets" & Make-up Kitchen

Toronto, Ontario - Canada



IN PARTNERSHIP WITH

MORE UPCOMING AUCTIONS - SEE WEBSITE FOR MORE INFORMATION

SEPT. 13TH

COMPLETE POTATO CHIP PRODUCTION PLANT - AVAILABLE FOR TURN KEY + REAL ESTATE INCLUDED

Formerly of Mikesell's Snack Food Company

- Potato Receiving & Prep
- Batch Type Kettle Chip Cooking System
- Continuous Chip Cooking Department

Dayton, OH



IN PARTNERSHIP WITH

SEPT. 27TH

200 TPD RECYCLED PAPERBOARD MILL

Formerly of Graphic Packaging International

- 87" Trim Cylinder Machine with 7 Black Clawson Bristol Formers
- Marquip 57" knife sheeter with multiple roll stands
- OCC stock prep system

Tama, IA



IN PARTNERSHIP WITH

ORDERLY LIQUIDATION

LATE MODEL MDF (MEDIUM DENSITY FIBERBOARD) MANUFACTURING FACILITY Launched in 2020 - calplant.

Over \$380 Million Invested

- (4) Straw Bale Receiving, Chopping & Pulverizing Lines
- (4) Primary Cleaning & Separating Systems
- Pallmann Refining Plant

Willows, CA



IN PARTNERSHIP WITH

Leading Industrial And Commercial Liquidators.

Contact Rabin Worldwide For Your Liquidation And Equipment Needs Today.

Check Rabin.com For More Upcoming Food & Confectionery Equipment Auctions

+1.415.522.5700

Email: info@rabin.com

See it all now at... **rabin.com**

ABSOLUTE AUCTION

**RETIREMENT
LIQUIDATION**

SATURDAY, AUGUST 19 • 10 AM

LOCATION & ADDRESS: 3632 BUTLER BRIDGE RD. — MILLS RIVER, NC

**ONSITE
& ONLINE
AUCTION**



WELDING UNLIMITED



INSPECTION: FRIDAY AUGUST 18 • 10:00 AM - 4:00 PM

**• FABRICATION EQUIPMENT • WELDERS • TRUCKS
• STEEL & SUPPLIES • TOOLS • BLACKSMITH EQUIPMENT**

PARTIAL LISTING...

FABRICATION EQUIPMENT:

Durma Mdl. SB 3013 NT Plate Shear, 1/2" cap. S/N 6088064334, Durma Digital Read-Out. One Owner; Purchased New 2006
LVD Mdl. 80/508, 80 Ton x8"CNC Hydraulic Press Brake, S/N 18021
Peddinhhouse Peddimax 110/140 Iron Worker, S/N 442364660206005. One Owner; Purchased New 2007
Uni Hydro Mdl. 6-24 Iron Worker, S/N 1P66903. One Owner; Purchased New
ALMI Belt Sander AL-100U (2013)

EAGLE Roller Machine 7302R.PR SAWS

DoALL Mdl. TF1421, Hydraulic Vertical Tilting Frame Metal Band Saw, 14"x21" S/N 337-88553
(3) **FMB** Antares Miter Band Saws, S/N A02352-NG00437-S000828. One Owner; All Purchased New

TRUCKS

2017 Ford F-350 w/Service Body, V-8 Gas, Auto Trans., 4WD, 41,000 Miles, VIN #1FD8W3H67HEC82045 One Owner; Purchase New
2015 Ford Transit w/Boxes, 350 HD, VIN #1FDRS6ZM7FKA76396,

23,000 Miles, ONE OWNER; PURCHASED NEW

2007 Chevrolet HD 3500 Flatbed Dump, V-8 Gas, Auto Trans., 98,000 Miles, VIN #1GBJC34U57E168566 ONE OWNER; PURCHASED NEW
2006 Ford F-150 Pickup, V8 Gas, Auto Trans. 64,000 Miles, VIN #1FTR12246NB25542
1977 Ford Bronco Sport, 302 Gas Eng., Auto Trans., Original Paint & Interior, Two Owners
WELDERS & PLASMA CUTTING TABLE
Miller Bobcat 225 Gas Stick Welder/Generator, S/N

LH081177H
(2) **Miller Bobcat** 225 Gas Stick/Welder, S/N ME490929R, LH081177H
Lincoln Ranger 225 Gas Stick/Welder, S/N 530277-VM
Miller 135, S/N LC210461
Miller 185, S/N LA083569
Miller 211, S/N NA421336N
(3) **Miller** 212, S/N MD400357N, MB340032N, ME201608N
MK170232N
Miller 350p Alum. Mig Machine, LJ3607888

+ MUCH MORE

PLEASE VISIT OUR WEBSITE FOR FULL TERMS * 10% Buyer's Premium will be added to all high bids to determine sales price. Online Buyer's Premium is 13%. 6.75% Sales Tax will be collected unless a Resale or Agricultural Exemption Certificate is provided at time of payment.

KING
AUCTION & REALTY CO., Inc.

JERRY KING • 828-230-7075
NC FIRM LIC. #7551



CAN'T MAKE IT TO THE AUCTION?

proxibid.

BidSpotter.com

(800) 359-5608

www.bidkingauctions.com

RECEIVERSHIP AUCTION

OF MAFIC USA LLC



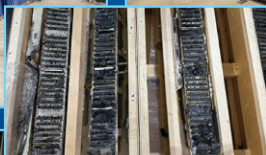
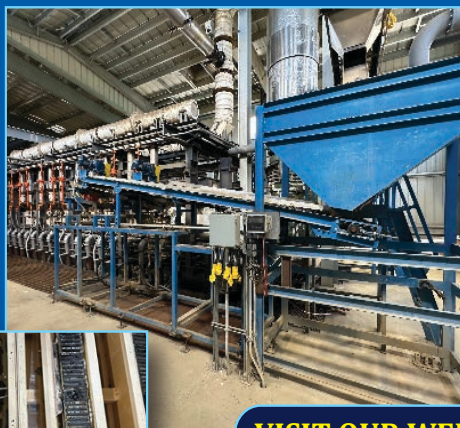
BID DEADLINE: TUESDAY, AUGUST 22, 2023 - 2PM

Selling for Richard S. Wright, general receiver appointed by The North Carolina Business Court

REAL PROPERTY: 45,780 +/- Sq.Ft. Commercial Building on 5.09 +/- Acres and located at 119 Metrolina Dr., Shelby, NC 28150. 7.59 +/- Acre Lot located adjacent to 119 Metrolina Dr., Shelby, NC 28150 with Primary access being on Partnership Lane, Shelby, NC 28150.

PERSONAL PROPERTY: All remaining Assets located at 119 Metrolina Dr., Shelby, NC 28150.

This includes but is not limited to precious metal inventory, machinery and equipment, Basalt Rock inventory, Basalt Fiber Inventory and office furnishings more adequately described below.



VISIT OUR WEBSITE



IRONHORSEAUCTION.COM 800.997.2248 - NCAL 3936



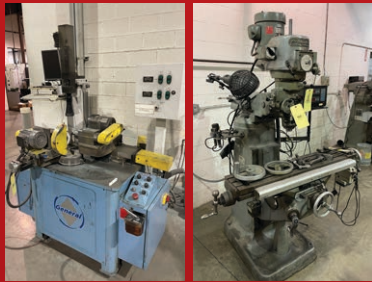
AUCTION

ABSOLUTE AUCTION, ALL SELLS TO THE HIGHEST BIDDERS ONLINE ONLY AMERICAN CARBIDE TOOL AUCTION

3620 Progress Ave. NE • Canton, OH 44705

Bidding Starts: Tuesday, August 1, 2023 - 12:00 PM

Bidding Ends: Tuesday, August 22, 2023 - Starting at 12:00 PM



**AgieCharmilles Wire EDM 100hp & 75hp Ingersoll
Compressors – MTA Chillers – Band Saws
Bridgeports – Grinding Machines
Horiz. & Vertical Mills – Rod & Bar Steel Stock
Carbide Grinders – Induction Heaters
Airflow Systems – CNC Grinders - Laser Markers**

PREVIEW DATE:

Wednesday - August 16, 2023 – 9:00 AM - 3:00 PM

Thursday - August 17, 2023 – 9:00 AM - 3:00 PM

PICKUP DATE: Friday - August 25, 2023 – 9:00 AM - 5:00 PM

Monday - August 28, 2023 – 9:00 AM - 3:00 PM

Tuesday - August 29, 2023 – 9:00 AM - 3:00 PM

Wednesday - August 30, 2023 – 9:00 AM - 3:00 PM

Thursday - August 31, 2023 – 9:00 AM - 3:00 PM

EQUIPMENT:

Nice AgieCharmilles Progress Focus 2 Wire EDM Machine With PCD & CBN Modules (Advantage Chiller Included) – Fryer MB-8 CNC W/ Haas Rotary Indexer & Rotary Vise – (2) Bridgeport Mills – Approx. 5 Hammond 14" Carbide Grinders – Approx. 4 Hammond 10" Carbide Grinders – Multiple Airflow Systems Inc. Dust Collectors (Model 2400 VOM, Bought New 2000) – Custom Made Carbide Grinding Machines – Kelco Blasting Cabinets – Spirotherm Electric Furnace – Master Cut Automatic Power Band Saw (S-300 HB) – Sweco Vibratory Tumblers – (3) DoALL Upright Band Saws – Hyd-Mech Automatic Cut Off Saw (H-10A) – Kent Owen Vertical & Horizontal Mills – Surface Grinders – Optical Comparators – South Bend Small Metal Lathe – O.K. Die Tri Metal Shim Cutting Machine – General Wheel Truing Machine

AIR COMPRESSORS – CHILLERS:

Ingersoll-Rand 75hp & 100hp Compressors – Ingersoll-Rand 7.5hp Compressor – (2) MTA Chiller Units (Model #TAE81) 230/3-Phase – (2) Large Compressed Air Tanks – Hankison Compressed Air Dryer (Model 80100) – Harig Surface Grinders – Sigma Optical Comparator – Lepel Induction Heating Units (30kw & 10kw) – Custom made Braze Solutions Semi-Automated Induction Heater – FOBA M-Series Laser Marking Systems – J&L Metrology MC.14 Optical Comparator – Hawk Microscope W/ Quadra Check 200 – (2) EWAG EZGrind CNC Grinders – (2) EWAG RS12 Grinding Machines – Cincinnati Hone Machine – EWAG LS01 Land Machine – Geo. Schmidt Semi-Auto Roll Stamper Marking Machine – Conveyor Track – Pallet Shelving – Parts Cabinets – Steel Carts – 250# Jib Crane – 500# Overhead Crane W/ Steel Carriage System

STEEL STOCK – SCALE – WELDERS:

Loads New Bar Rod Steel Stock, Varying Sizes & Quantities – Lincoln 140C Mig Welder – Lincoln Stick Welder – B-Tek Digital Platform Scale

CHATTEL TERMS: Visa, MasterCard & Wire Transfer accepted. Wire Transfer required on purchases totaling \$2,000 or greater. 10% buyer's premium on all sales. Information is believed to be accurate but not guaranteed. Multi Par auction process may be used.

AUCTIONEERS/REALTORS:

George P. Kiko
330-418-1095
george@kikocompany.com

Russell T. Kiko Jr.
330-495-0923
rustykiko@kikocompany.com

KIKO Auctioneers • (330) 455-9357 • www.kikoauctions.com

ONLINE AUCTION ONLY

TONY DRILLING SUPPLIES, INC 3

Assignment for the Benefit of Creditors Case No.: 2023-015621-CA-01

Lots Close: Tues, Aug. 29, 2023 at 10:00 A.M.

Pick-up | Removal Locations: 14060 NW 19 Avenue, Opa Locka, FL 33054.

Inspection | Preview date: Mon, Aug. 28th from 10:00 A.M. to 4:00 P.M. by appointment



SALE WILL CONSIST OF:

- Surplus Parts
- Supplies
- Machinery
- Drilling Bits
- Tools
- Equipment
- Vehicles
- And More

18% Buyer's Premium (BP) will apply to all lots.

Live Online Bidding Powered By: **proxibid**

Check Website for More Info., Photos, and Catalog: **www.moeckerauctions.com**

**MOECKER
AUCTIONS** INC.

AUCTIONEERS • LIQUIDATORS • APPRAISERS



AU 3219, Eric Rubin
AB 1098

1885 Marina Mile Blvd., Suite 103 • Fort Lauderdale, FL 33315
Toll Free 800-840-BIDS • Phone: 954-252-2887
info@moeckerauctions.com

www.moeckerauctions.com

UPCOMING AUCTIONS



Live Auction Via Webcast

CNC Machine Tools & Plant Support Assets Used in Vertical
Integration Solutions for Metal Machining & Aircraft Door Assemblies

SALE DATE
Sept. 6 • 10 AM PT

Location: 701 Milwaukee Ave. N, Auburn, WA 98001 | **Inspection:** September 5, 9 AM to 4 PM PT by appointment only



FEATURING: MAZAK Velocity SVC2000L/200 CNC Vertical Machining Center, (2) OKUMA MC-60VAE VMC, OKUMA MX-55VB VMC, (2) MATSUURA MC-800V VMC, (2) DAEWOO DHM-630 HMC, CINCINNATI Centerless & Cylindrical Grinders, SUNNEN Cylinder King CK-21 Vertical Hone, SUNNEN, ECLIPSE EC-3500 Power Stroking Hone, COLONIAL (BMS) HAS-10-48 Horizontal Broach, ATLAS COPCO GA15 20 HP Compressor, Conventional Machine Tools, TSODAKOMA Rotary Tables, Pallets, Tombstones & Plant Support

Perfection Global, Washington Firm License #21012283

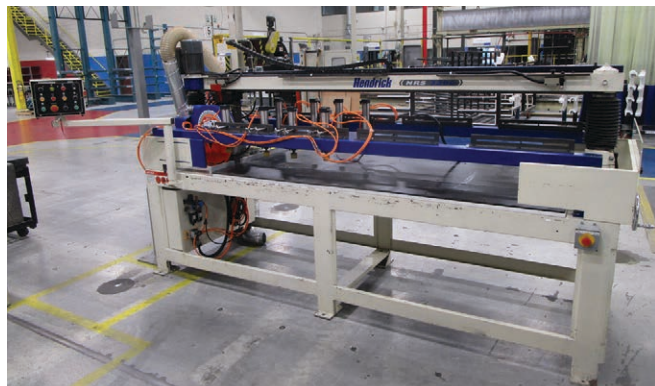


Online Auction

Global Leading Aerospace Airframe & Assemblies Manufacturer

SALE CLOSING
Sept. 7 • 10 AM ET

Location: 123 Rue Avro, Dorval, Quebec H9P 2Y9 | **Inspection:** September 6, 8:30 AM to 4 PM ET by appointment only



FEATURING: Over 350 Lots Including HENDRICK NRS 3200 Aluminum Block Saw w/ AIREX Recovery Unit, ZEISS CMM, R&K Machinery 50 Ton Press, Machine Tools, 1,500 + HSK 100, 80, 63 & CAT 50 Tool Holders, SULLAIR 100 hp Air Compressor & Dryers, Cantilever Racks, 40' Containers & Factory Support Equipment

**PRE-AUCTION OFFERS INVITED
FOR MAJOR ASSETS**

Bid Online via
BidSpotter

In Conjunction
With



AUCTION CONTACT:
Jennifer Reiner • (847) 545-6374
jennifer@perfectionindustrial.com

**PERFECTION
Industrial Sales**
www.perfection.global/auctions

2



WEBCAST AUCTIONS



WEBCAST AUCTION OF CONTRACT MANUFACTURER WITH COMPLETE MACHINING & FABRICATION OPERATIONS
FEATURING CNC MACHINING, CNC PRESS BRAKES, SHEARS, PUNCHES, SAWS, GRINDERS, SANDERS, LATHES, MILLS,
DRILLS, WELDERS, TOOLING, INSPECTION, PLANT SUPPORT & MORE



OWNER RETIRING
CUSTOM INDUSTRIES, INC.

215 Aloe Road • Greensboro, NC 27409

SALE DATE: THURSDAY, SEPTEMBER 7TH STARTING AT 10:00AM EST

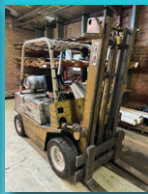
INSPECTION: Wednesday, September 6th from 10:00am to 4:00pm

FEATURING:

- CNC Machines by Haas, Mori Seiki & Okuma
- (4) Press Brakes & Shears by Amada, Chicago, Cincinnati & Wysong
- Single End/Turret Presses, OBI Presses & Notching Equipment
- Saws, Grinders & Sanders – DoAll, Enco, HEM & More
- Welders & Related – Miller, Lincoln, McKay/Federal
- Complete Toolroom – Lathes, Mills, Drills + Lots of Tooling
- (4) Lift Trucks by Clark, Hyster & Yale up to 5,000 LB
- Clean Inspection Equipment – Gauges, Hardness Testers, Micrometers, Etc.
- Misc. Machinery – Hones, Insertion Press, Blast Cabinets, Ovens, Tap Disintegrators
- (2) Kaeser Air Compressors up to 50 HP with Dryers
- Large Qty. Plant Support Assets

18% ON-LINE BUYERS PREMIUM

Auctioneers: Cincinnati Industrial Auctioneers, Inc. – License No. 5610 • Joseph M. Luggen – License No. 9333



WEBCAST AUCTION OF LARGE CAPACITY PRECISION CNC BORING AND MACHINE SHOP INCLUDING
(8) TOSHIBA AND SNK NISSIN ROTARY TABLE CNC HORIZONTAL BORING MILLS, G&L BORING MILLS,
COGSDILL HEADS, BORING MILL ACCESSORIES, OKUMA CNC LATHE, TOOLROOM, AIR COMPRESSOR,
FORKLIFTS AND SUPPORT EQUIPMENT



IMPERIAL MACHINE & TOOL

1785 Wall Rd. • Wadsworth, OH 44281

SALE DATE: TUESDAY, SEPTEMBER 12TH STARTING AT 10:00 AM

INSPECTION: Day prior from 10:00 AM to 4:00 PM or by appointment with jeffr@cia-auction.com

FEATURING:

- 5.12" Toshiba BTH130 Rotary Table CNC Horizontal Boring Mill (Mfg. 2012 Installed 2014)
- (5) 5.12" SNK Nissin NB130P Rotary Table CNC Horizontal Boring Mills (2004 to 2011)
- 4.3" SNK Nissin NB110T Rotary Table CNC Horizontal Boring Mill (2010)
- (4) Cogsdill Heads
- (500) No. 50 Toolholders
- Indexable Tooling and Inserts
- Angle Plates, Rotary Tables, Hold Downs
- EZ Set 600 Tool Setter
- Okuma Heritage ES-L6 CNC Lathe
- 60" Gray VMB-6 CNC VTL w/ Fanuc 18i Control
- Toolroom Machinery
- Forklifts to 10,000 Lb.
- Welding Equipment
- Inspection Tools
- Lista and Vidmar Cabinets
- Shop Equipment



18% BUYERS PREMIUM IN EFFECT FOR ALL PURCHASES

Auctioneers: Cincinnati Industrial Auctioneers, Inc. – License No. 63-1983-10439 • Jeffrey L. Luggen – License No. 57-1983-33789 • Joseph M. Luggen – License No. 2010-0000-19



**CINCINNATI
INDUSTRIAL
AUCTIONEERS**
auctioneers | appraisers | since 1961

Check our website for ongoing & future auctions!

BidSpotter

For Photo Gallery & Sale Catalog & Additional Information Visit:

www.cia-auction.com

CUSTOM TOOLING SYSTEMS, INC.

ONLINE AUCTION

BIDDING ENDS: TUES, SEPT. 12TH

STARTS AT 8:00 AM • STARTS CLOSING AT 6:00 PM ET

LOCATION: 3331 80th Avenue • Zeeland, MI 49464

After 30+ years of quality service in the industry and community, the owners of Custom Tooling Systems, Inc. have decided to retire and will be selling all machinery, equipment, tooling, vehicles, and more, via online auction with Orbitbid.com - a Miedema Asset Management Group Company.

- 2012 YAMA SEIKI / AWEA LP4025 BRIDGE TYPE VERTICAL MACHINING CENTER, 94.5" X 159" T-SLOTTED TRAVELING TABLE, 6000-RPM
- 2011 YAMA SEIKI / AWEA LP4025Z BRIDGE TYPE VERTICAL MACHINING CENTER, 94.5" X 159" T-SLOTTED TRAVELING TABLE, 6000-RPM
- 2013 HAAS EC400 HORIZONTAL MACHINING CENTER
- 2005 HAAS SUPER VF-6SS VERTICAL MACHINING CENTER
- 2000 HAAS VF-2 VERTICAL MACHINING CENTER
- 1998 HAAS VF-2 VERTICAL MACHINING CENTER
- 1997 HAAS VF-2 VERTICAL MACHINING CENTER
- 2012 AGIE CHARMILLES CUT 200P CNC WIRE ELECTRICAL DISCHARGE MACHINE
- 2017 AGIE CHARMILLES CUT 300SP CNC WIRE ELECTRICAL DISCHARGE MACHINE
- 2000 AWEA SP3016 BRIDGE TYPE VERTICAL MACHINING CENTER
- 1999 AWEA SP3016 BRIDGE TYPE VERTICAL MACHINING CENTER
- 1998 MAKINO GF6 VERTICAL MACHINING CENTER
- LAGUN REPUBLIC FTV-25 VERTICAL MILLING MACHINE
- LAGUN REPUBLIC FTV-2S VERTICAL MILLING MACHINE
- HITACHI / SEIKI 2ML-V VERTICAL MILLING MACHINE
- OKK MH-2V VERTICAL MILLING MACHINE

PRESS EQUIPMENT:

- CLEVELAND 4-800-204-102 STRAIGHT SIDE DOUBLE CRANK PRESS, 800-TON, 102" X 204" BED
- CLEVELAND 120D-12A-900 STRAIGHT SIDE DOUBLE CRANK PRESS, 900-TON, 66" X 125" BED
- COWLILSHAW WALKER SE4-400-96-60 STRAIGHT SIDE SINGLE CRANK PRESS, 400-TON, 60" X 96" BED
- BRITISH CLEARING F-4400-136X84 STRAIGHT SIDE SINGLE CRANK PRESS, 400-TON, 84" X 136" T-SLOTTED BED
- MINSTER 50-10-120 STRAIGHT SIDE DOUBLE CRANK PRESS, 450-TON, 88" X 120" BED
- UNKNOWN STRAIGHT SIDE DOUBLE CRANK PRESS, 380-TON, 65" X 170" BED
- DALLAS INDUSTRIES, INC. COIL FEED LINE, 20000# CAPACITY, 60" X 72" DIA. MAX. COIL SIZE
- AMERICAN STEEL LINE, 60 STRIP FEEDING LINE, 6000# CAPACITY, 32" X 60" DIA. MAX. COIL SIZE
- ROYAL T300C FORKLIFT TRUCK, 30000# MAX. LOAD CAPACITY
- 1999 CATERPILLAR GC25K FORK LIFT TRUCK
- 1990 HYSTER S155XL FORKLIFT TRUCK, 14600 MAX. LOAD CAPACITY
- 2008 BROWN & SHARPE GLOBAL CLASSIS 09.15.08 CNC COORDINATE MEASURING MACHINE



- GRAND RAPIDS / GALLMEYER LIVINGSTON 670 HYDRAULIC SURFACE GRINDER
- 1996 KENT KGS-410 AHD HYDRAULIC SURFACE GRINDER
- 1998 KENT KGS-510AHD HYDRAULIC SURFACE GRINDER
- 1976 LEBLOND GEARED HEAD ENGINE LATHE
- 1956 LUCAS 42B-60 HORIZONTAL BORING MILL
- ROLL-IN-SAW VERTICAL BAND SAW
- ALLEN COLUMN MOUNTED SINGLE SPINDLE DRILL PRESS
- ALLEN COLUMN MOUNTED SINGLE SPINDLE DRILL PRESS
- CARLTON RADIAL ARM DRILL
- 1989 CHEVALIER FM-3VS VERTICAL MILLING MACHINE
- 1987 CHEVALIER FM-3VS VERTICAL MILLING MACHINE
- 1987 CHEVALIER FSG-618M SURFACE GRINDER
- CINCINNATI BICKFORD RADIAL ARM DRILL
- CLAUSING 2287 SINGLE SPINDLE DRILL PRESS

- CLAUSING METOSA C1440S GEARED HEAD ENGINE LATHE
- DO-ALL D-6 SURFACE GRINDER
- 1988 DO-ALL TF-2012M VERTICAL BAND SAW
- DO-ALL V-36 VERTICAL BAND SAW
- DO-ALL V3616 VERTICAL BAND SAW
- HECK INDUSTRIES TRACE PUNCH 4 C-FRAME PUNCH
- HYPERTHERM POWERMAX 65 PLASMA CUTTER
- 1979 IKEDA RM-1575 RADIAL ARM DRILL

VEHICLES

- 1997 FORD F900 FLATBED TRUCK
- 2014 RAM 1500 PICKUP TRUCK
- 2015 RAM 3500HD FLATBED TRUCK

MISCELLANEOUS:

- LARGE ASSORTMENT OF MACHINE TOOLS AND TOOLING
- LARGE ASSORTMENT OF SHOP EQUIPMENT, SUPPORT EQUIPMENT, RACKING AND MATERIAL HANDLING
- ASSORTED OFFICE FURNITURE AND OFFICE ELECTRONICS

PREVIEW WILL BE AVAILABLE THE DAY BEFORE THE AUCTION FROM 12PM TO 4PM AND THE DAY OF THE AUCTION FROM 8AM - 5PM

MIEDEMA'S
ORBITBID
www.orbitbid.com

For all terms and conditions of this sale go to
bid.orbitbid.com
 or give us a call **616-261-4987**



ONLINE ONLY AUCTION



(New 2023) BETTER ENGINEERING #F-6000-P S.S. ROTARY PARTS WASHER • (4) (New 2021) AMT #WRL-4013 "CROSS-WEDGE" HOT ROLL FORMING MACHINES •
 (New 2020) AJAX-TOCCO #PACER-T INDUCTION HEATERS • (New 2022) STANLEY VIDMAR-STAK STORAGE SYSTEM •
 (New 2020) YEOSHE HYDRAULIC BROACHING & STAMPING MACHINES • (New 2020) YEOSHE BROACH GRINDERS •
 (New 2022) CHORNG INLINE-PARTS GRINDERS • (New 2021) FANUC ROBOTS w/ Controls • (New 2021) FINE BLANKING EMBOSSEING PRESSES •
 (New 2020) MUNK RECTIFIERS • IES AUTOMATED RATCHET CELL • FORGING SUPPORT EQUIPMENT • PLANT SUPPORT & & MUCH More!

400+
LOTS

By Order of:

Stanley Black & Decker, Inc.

15100 N. Beach Street, Roanoke (Fort Worth), Texas

400+
LOTS



VIEW of YEOSHE BROACHING & STAMPING MACHINES



AMT #WRL-4013-01 CROSS-WEDGE ROLL FORMING MACHINE



CHORNG MACHINERY (Taiwan) TOOL PARTS GRINDING MACHINE



AJAX-TOCCO #PACER-T INDUCTION HEATER

SALE DATE: Wednesday, September 13th, 11:00 AM (ET)

INSPECTION DATE: Tuesday, September 12th, (9:00 AM - 4:00 PM) (CT)

Tom DeCosmo, Jr. • (413) 530-0019 • tomjr@diauctions.com

Sale under Management of:

DeCosmo Industrial Auctions

P.O. Box 569, Agawam, MA 01001

www.DIAUCTIONS.com • info@diauctions.com

Lance Mannion, Auctioneer • TX. License # 13968

Thomas J. DeCosmo, Auctioneer • MA. License # AU-2665



Auctioneers & Appraisers Since 1982



Auctioneers & Appraisers Since 1982

2-DAY FALL PUBLIC AUCTION

13340 Florida Blvd.
Livingston, LA 70754

Preview : Wednesday | September 13th, 2023 | 9-4

Thursday & Friday | Sept 14-15, 2023 | 9 am



WATCH WEBSITE FOR UPDATES

ACCOUNT MANAGERS:

Kurt Sonnier 225.363.8778, Guy Jones 225.431.0544,
and Jason Bush 225.431.0542



DAY 1: Selling Industrial Equipment, Farm Equipment, Tractor Trucks, Service Trucks, Dump Trucks, Pick-Ups, Trailers, Containers, ATVs, Campers, Boats, Motorcycles, and More!

DAY 2: Selling Construction Equipment, Industrial Equipment, Forestry Equipment, Forklifts, Lifting Equipment, Attachments, Welding Supplies, Asphalt Equipment, Safety Equipment, and More!

QUESTIONS?
CALL 800-850-2252
OR 225-686-2252

www.HendersonAuctions.com



**Liquidations | Government Surplus | Marine
Industrial | Farm | Construction | Collector Cars**

What can we sell for you? 225.686.2252

13340 Florida Blvd. Livingston, LA 70754 | 225.686.2252

10% Buyer's Premium on each item purchased.

Auctioneer: J. Henderson LA-1160 | MS-1601 | MS Firm 426

3 INDUSTRIAL ONLINE AUCTIONS

SURPLUS TO THE ONGOING OPERATIONS OF A MAJOR ICE CREAM MANUFACTURER!

**PROCESSING & PACKAGING ICE CREAM MANUFACTURING EQUIPMENT
FROM SURPLUS & IDLE STORAGE**

Location: Ludington, Michigan

BidSpotter

Lots Start Closing: August 22, 2023 • 10:00 AM US/Central

Processing & Packaging Ice Cream Manufacturing Equipment from Surplus & Idle Storage.
For Equipment Questions or Inspections, Contact Dan at danr@schneiderind.com



DRYING / POWDER PROCESSING EQUIPMENT AUCTION

**THE AUCTION INCLUDES WITTE FLUID BED DRYER, AUGERS,
100' TUNNEL OVENS, 48" GREAT WESTERN SIFTER & MORE!**

Location: Oklahoma City

BidSpotter

Lots Start Closing: August 23, 2023 • 10:00 AM US/Central

Pickup Information to be added soon. For questions about a lot, the rigging fees or to schedule an on-site inspection please email Riley & riley@schneiderind.com



2 DAY AUCTION- PLANT CLOSED!

EQUIPMENT FROM A MAJOR CHEMICAL COMPANY

Location: 5100 West Jefferson • Trenton, MI

BidSpotter

Lots Start Closing: August 29, 2023 • 10:00 AM US/Central

FEATURES: Stainless Process Tanks, Storage Tanks, Heat Exchangers, Generators, Compressors, Centrifuges, Plant Support and More! Inspection by Appointment only. Day 1 Lots Close Starting August 29th at 10:00 AM CDT Day 2 Lots Close Starting August 30th at 10:00 AM CDT



SCHNEIDER INDUSTRIES, INC.

121 Hunter Ave., Suite 204 • Saint Louis, MO 63124

314-863-7711 • www.schneiderind.com



CNC CONSIGNMENT AUCTION SALE

50+ CNC HIGH END CNC MACHINE TOOLS - MULTI LOCATIONS

DOOSAN, NOMURA, STAR, HAAS, OKUMA, MORI, MAZAK, TOYODA, FANUC

**75 EAST PALATINE RD
PROSPECT HEIGHTS, IL 60070**

BID ONLINE AT: BidSpotter

**BIDDING CLOSES:
AUGUST 23RD • 10:00 AM**



DO YOU HAVE MACHINES TO SELL???
CALL 312-280-1234 CASH AVAILABLE TODAY!!!

Go to: www.premierarg.com for further updates

Need an auction? Give us a call
312-280-1234



MACHINES FOR SALE?
CALL 312-280-1234

REGISTER & BID ONLINE - Buyers Premium: 18%
www.premierarg.com

Premier License: 044000209 Glenn Gray License: 041000721

Premier Asset Recovery Group: 77 E. Palatine Rd., Prospect Heights, IL 60070 • **312-280-1234** • **info@premierarg.com**

D & J MACHINERY & RIGGING, LLC ABSOLUTE RETIREMENT AUCTION

VIEW ALL
ITEMS, PHOTOS
AND AUCTION
INFO
ONLINE!

10%
BUYERS
PREMIUM
PER ITEM

SEPTEMBER 7TH
BIDDING BEGINS CLOSING AT 11AM ET

LEXINGTON, SC

JEFF MARTIN AUCTIONEERS INC.

1-844-450-6200 • www.JeffMartinAuctioneers.com

CHECK OUT OUR WEBSITE FOR DETAILS AND MORE AUCTIONS

MANY MORE PHOTOS AVAILABLE ONLINE!

WEBCAST AUCTION

3-DAY AUCTION- FORMER ASSETS OF INTERNATIONAL COOLING TOWER ERECTOR

7335 IN-59, BRAZIL, IN 47834

AUGUST 15, 16 & 17 at 9AM ET

Inspection - Monday, 8/14/23 from 9AM - 4PM

(23) Timberland Skid-Mounted Diesel Winches - SW 17, SW 14, SW12, SW8 • (30+) Pneumatic Winches • (4) Clyde Whirllette W3-G-40 Cranes • (4) Telehandlers • (4) Carry Deck Cranes • (10+) Forklifts • (25+) Trailers • (5) Ford Trucks • Light Towers • Utility Vehicles • Concrete Forms • Buckets • Scaffolding • (200+) Electric Hoists • Large Quantity of Rigging Items • Welders • Shop Equipment • Cooling Tower Inventory • Duey-Dag Hyd. Jacks • Generators • 1,000+ Power, Pneumatic, Hand Tools • Enerpacs HILTI • Inspection • Drone



18% BP with Bidspotter.com | Thomas Bowling - IN Auction Lic. # AU11900025 • MBA, Inc. - AC32100015

MYRON BOWLING
AUCTIONEERS, INC.

(513) 738-3311 | MyronBowling.com

CINCINNATI INDUSTRIAL AUCTIONEERS
www.cia-auction.com

HVAC CONTRACTOR RETIREMENT AUCTION





GEYER AUCTIONS
AY-000243-L
Mark Akins, President
647 Congo Road • Gilbertsville, PA 19525

**HVAC CONTRACTOR RETIREMENT AUCTION
COMPLETE LIQUIDATION
ONLINE ONLY AUCTION**
Online bidding closes
Wed. August 16th at 1pm
View the catalog and bid online at geyerauctions.hibid.com

Location: 4 East Pointe Drive
Birdsboro, PA 19508
Preview and Inspections:
Saturday August 12th 10am-2pm
Tuesday August 15th 10am-4pm

**Michael C Wall Heating,
Air Conditioning and
Sheetmetal of Reading, PA**
After 40+ Successful years of
providing the finest HVAC services
to Berks County and beyond, Mr.
Wall has decided to retire. All
items are owned (most purchased
new) by Michael C. Wall HVAC and
will be sold to the highest bidder
without minimums or reserves!

Low mileage trucks and vans,
sheet metal fabrication equipment,
contractor tools and equipment
that have been meticulously
maintained. This will be a very
large auction with of 1200 lots of
quality tools and equipment!
















484-239-3273 • GeyerAuctions.hibid.com

WEBCAST AUCTION

COMPANY CLOSING - SEMI-NEW MACHINERY INSTALLED
**SOMIN COMPAÑIA MINERA
 DE SONORA SA PI DE CV**
 HERMOSILLO, SONORA 83293 MEXICO
WED, AUGUST 23 at 10AM CST

Inspection - Day prior to auction from 9AM - 4PM

2018 CAT 420F2 IT Backhoe Loader • 2015 CAT 950GC Wheel Loader • CAT 950H/962h Wheel Loader • Thermal Kinetics Engineering PLLC 60,000-lb/hour 4-Effect Evaporation System - Padgett SS Crystallizer, & Evaporator, Gould Pump, Pressure Vessels • Culligan Reverse Osmosis Systems • Boilers • FEECO Gas Fired Rotary Dryer • Assorted Stainless Steel Tanks • Cooling Towers • Centrifugal Pumps • Vacuum Systems • Trucks • Generator • Ingersoll-Rand SSR EA100 Air Compressor & Dryer • Jaw Crusher • Mettler Toledo 85-Ton Truck Scale • Much More



18% BP | Thomas Bowling, Auctioneer | See MyronBowling.com for complete details

MYRON BOWLING
AUCTIONEERS, INC.

(513) 738-3311 | MyronBowling.com

MYRON BOWLING
AUCTIONEERS
MEXICO

UNLOCK
the **POWER**
of Catalyst TODAY
with **INDUSTRIAL**
Machine Trader.

SITE-WIDE
inclusion

SELF-SERVE
access
for clients

GEO-TARGETED
ad
placement

Also offering data pairing capabilities, enabling advertisers to target specific demographics and tailor their messaging accordingly.

published by



a leader
in business
communications

industrialmachinetraider.com • catalystcommunicationnetwork.com

August

08/01/23 to 08/22/23	KIKO Auctioneers	ONLINE AUCTION	Canton, OH	View >
08/03/23	Perfection Trial Sales	Live Auction Via Webcast	Covington, TN	View >
08/03/23	REDFIELD GROUP AUCTIONS, INC.	ONLINE AUCTION	Albertville, AL	View >
08/07/23 to 08/16/23	Big Iron Auctions	ONLINE AUCTION	Viola, KS	View >
08/08/23	Harris Machine Tools, Inc. / Harris Auctions	LIVE WEBCAST AUCTION	Houston, TX	View >
08/10/23	Link Auctions	ONLINE ONLY AUCTION	Online	View >
08/10/23	Myron Bowling Auctioneers, Inc.	Webcast Only Auction	Sanford, FL	View >
08/15/23	Moecker Auctions Inc.	ONLINE AUCTION	Online	View >
08/15/23 to 08/17/23	Myron Bowling Auctioneers, Inc.	ONLINE AUCTION	Brazil, IN	View >
08/16/23	Geyer Auction Companies	ONLINE AUCTION	Birdsboro, PA	View >
08/16/23	Cincinnati Industrial Auctioneers	Webcast Only Auction	Putnam, CT	View >
08/17/23	The Arizona Auctioneers, LLC.	ONLINE AUCTION	Phoenix, AZ	View >
08/18/23	Myron Bowling Auctioneers, Inc.	ONLINE AUCTION	Myron, NC	View >
08/20/23	Myron Bowling Auctioneers, Inc.	Webcast Only Auction	EXETER, NH	View >
08/20/23	Cincinnati Industrial Auctioneers	Webcast Only Auction	Terre Haute, IN	View >
08/29/23	Moecker Auctions Inc.	ONLINE AUCTION	Opa Locka, FL	View >

September

09/12/23	Miedema Asset Management Group	ONLINE AUCTION	Zeeland, MI	View >
09/19/23	Maynards Industries	Webcast Only Auction	Grand Rapids, MI	View >